

CS3-4

**Timing switch for
1 second to 20 hours**

(connection without neutral lead)

Is switched on immediately after pushing the button, but the timing itself starts only after button disconnecting.

CERTIFICATE OF GUARANTEE (guarantee period for the product amounts to 2 years)	
product No.:	date of sale:
examined by:	stamp of shop:

Send the product for guarantee and after-guarantee service to manufacturer's address.



ELEKTROBOCK CZ s.r.o.

Blanenská 1763
Kuřim 664 34
Tel./fax: +420 541 230 216
Technická podpora (do 14h)
Mobil: +420 724 001 633
www.elbock.cz



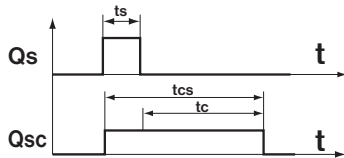
CS3-4

CS3-4 serves for delayed switching off of resistance and induction loads. It is switched on immediately after pushing the button, but the timing itself starts only after button disconnecting.

Setting of time

is linear, possible in the range from 0.5 s to 20 hours. The coarse setting is made by miniature switch according to table and fine setting by trimmer with using of a small screwdriver.

Thanks to special circuit used, a long-term stability of the time set is ensured, without substantial dependence on time, ambient temperature and supply voltage.



ts = interval of switching on
 tc = the time set on CS3-4
 tcs = total time of switching on of load (ts+tc)

Summary of produced types:

- CS3-1** activates the ventilator after switching the lighting off.
- CS3-1B** activates the ventilator at set time after switching the lighting on and deactivates it at defined time after switching the lighting off.
- CS3-2** timing switch for lighting.
- CS3-4M** multifunctional timing switch, 8 function
 - **connection without neutral lead.**

Specification:

Nominal operating voltage	Un=230 V
Nominal frequency of network	fn=50 Hz
Resistance load	15–200 W ⊗
Inductive load (of ventilator)	15–100 VA □
Limit of interference suppression	R 02
Cross section of installation leads	0,5 mm ²
Ambient temperature	-10°C to + 55°C
IP-20 and higher - according to the type of installation	
internal fuse	FU 2A/H 5*20mm

! Pozn.: CS3-4 is not suitable for switching of electronic sources of light. For loads < 15VA we recommend connect parallelly to the ventilator resistance 27-33 kΩ/ 2 W.

Setting the time and installation should be performed system that is not live and by a person with appropriate qualification in electrical engineering.