

TIMING SWITCH **CS3-1B**

- for delayed switching on/off of the ventilator in dependence to lighting.
- mounting under the control element



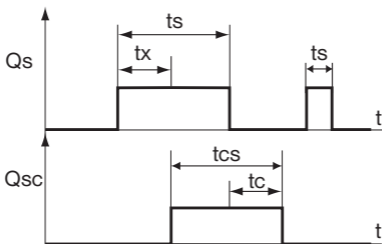
Activates the ventilator at set time (1 s to 5 min) after switching the lighting on and deactivates it at defined time after switching the lighting off.

DESCRIPTION

CS3-1B serves for delayed switching on/off of the ventilator in dependence to lighting.

TIME SETTING

The ventilator is activated in time interval of 1 second to 5 minutes after switching the lighting on. The interval is set on trimmer „delay“ with using of a small screwdriver. The ventilator is deactivated at time 1 second to 90 minutes after switching the lighting off. This interval is set by miniature switch according to the table and by trimmer „timing“ with using of a small screwdriver.



t_s = period of lighting

t_c = the time set on trimmer delay of CS3-1B

t_x = the time set on trimmer timing of CS3-1B

$t_{cs} = t_s + t_c - t_x$

t_{cs} = period of ventilator running

It is necessary to switch off the distribution system in the course of installation, replacement of bulb or fuse! Setting the time and installation should be performed system that is not live and by a person with appropriate qualification in electrical engineering.

Summary of produced types

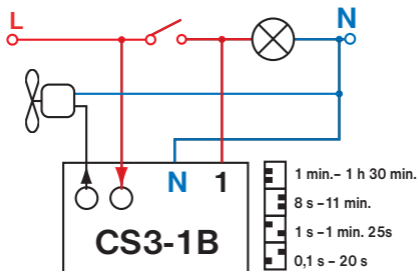
- CS3-1** activates the ventilator after switching the lighting off.
- CS3-2** timing switch for lighting.
- CS3-4** is switched on immediately after pushing the button, but the timing itself starts only after disconnecting - connection without neutral lead.
- CS3-4B** similar to CS3-1B, connection without neutral lead.
- CS3-4M** multifunctional timing switch - connection without neutral lead.
- CS3-16** multifunctional timing switch, for high loads (switching element is relay 16 A!).

CERTIFICATE OF GUARANTEE

(guarantee period for the product amounts to 2 years)




product No.:	date of sale:
examined by:	stamp of shop:

Send the product for guarantee and after-guarantee service to manufacturer's address.



Activates the ventilator at set time (1 s to 5 min) after switching the lighting on and deactivates it at set time (1 s to 90 min.) after switching the lighting off.

SPECIFICATIONS

Power supply	230 V/ 50 Hz
Switching element	triac
Input	< 0,5 W
Resistive load	20 to 350 W
Inductive load	20 to 200 VA
Cannot use for loads!	   LED
Max. cross section of inst. Cu cond.	0,5 mm ²
Protection	IP20 and higher according to the mounting
Working temperature	0°C to +50°C



ELEKTROBOCK CZ
MADE IN CZECH REPUBLIC
www.elbock.cz

ELEKTROBOCK CZ s.r.o.
Blanenská 1763
Kuřim 664 34
Tel./fax: +420 541 230 216



LEAD FREE
in compliance with RoHS2



PAP